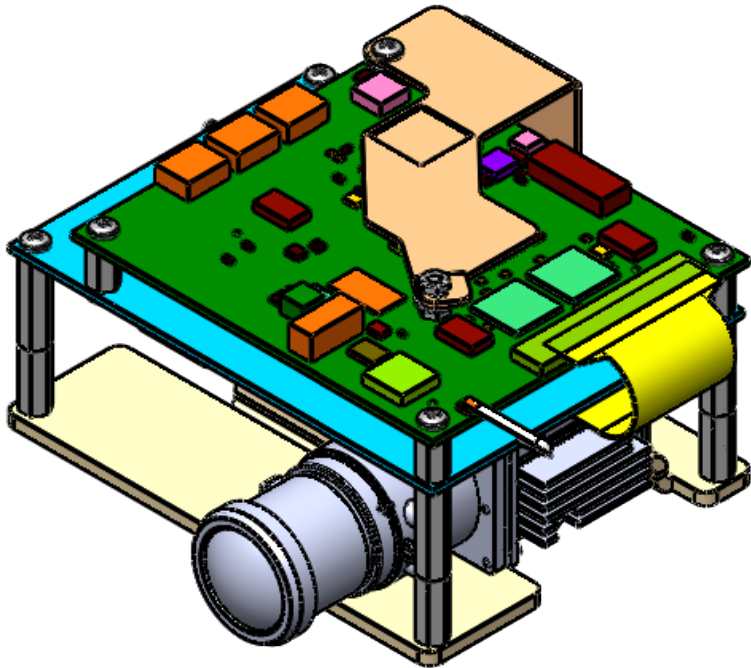
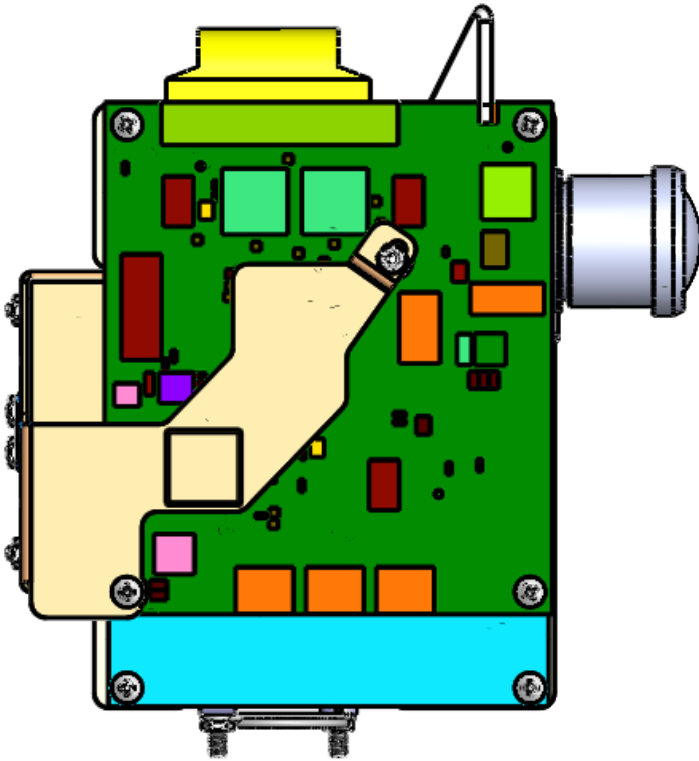
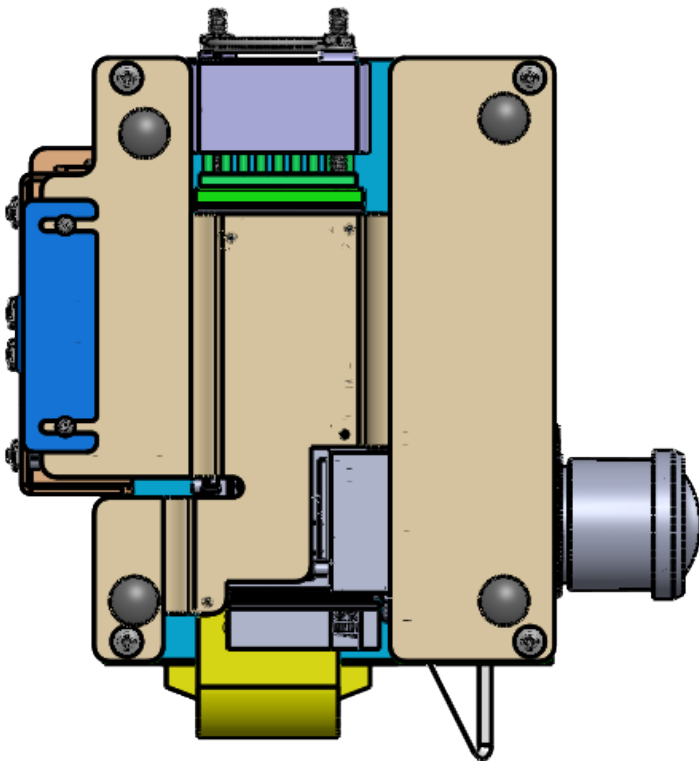
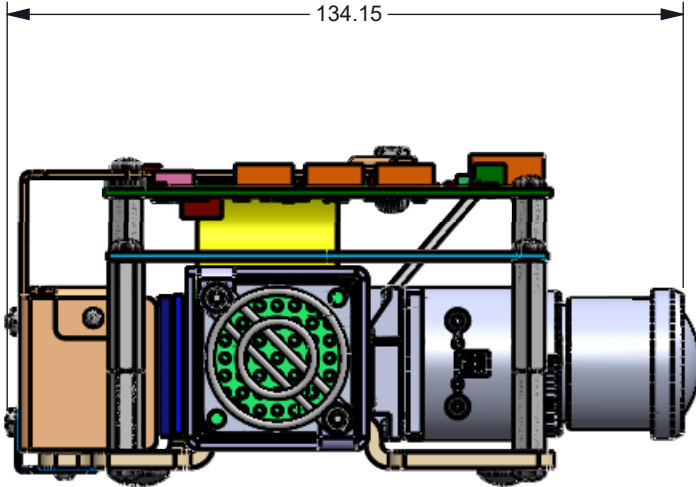
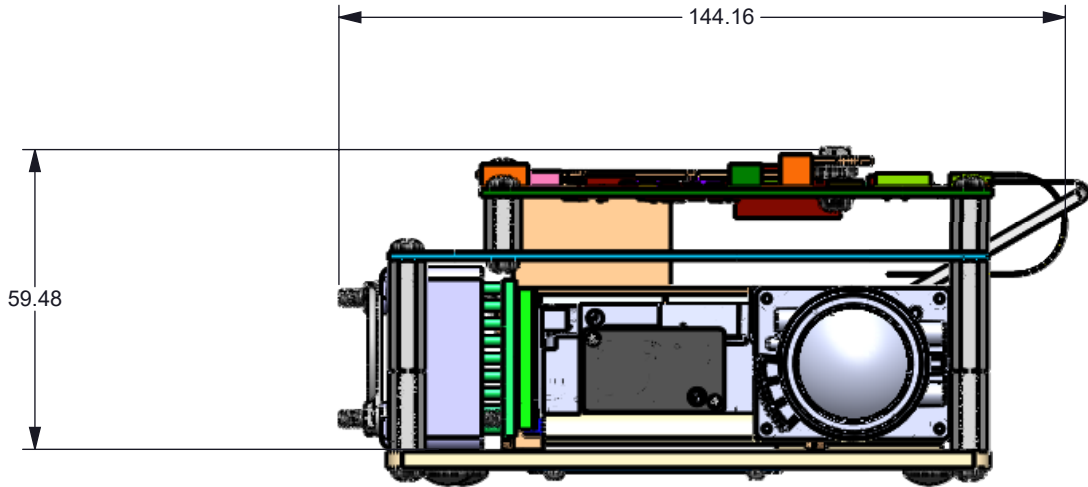


NOTES: UNLESS OTHERWISE SPECIFIED:

© COPYRIGHT 2014 TEXAS INSTRUMENTS
UNPUBLISHED, ALL RIGHTS RESERVED

REVISIONS			
REV	DESCRIPTION	DATE	BY
A	INITIAL DRAWING RELEASE	9/1/17	JCC
B	ADDITIONAL NOTES ADDED, HARDWARE CHANGED	9/25/17	JCC
C	LED LIGHT BLOCK ADDED	10/2/17	JCC
D	NOTES ADDED TO ALL SHEETS, BOMs UPDATED	10/10/17	JCC
E	ITEM 14 ON SHEET 3 CHANGED	10/19/17	JCC
F	CHANGED ITEM SHEET 6, BOM UPDATED	10/20/17	JCC
G	CHANGED ITEM ON SHEETS 2, 5 & 6	12/12/17	JCC



UNLESS OTHERWISE SPECIFIED

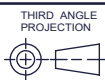
- DIMENSIONS ARE IN MILLIMETERS
- TOLERANCES: ANGLES $\pm 1^\circ$
2 PLACE DECIMALS ± 0.25
1 PLACE DECIMALS ± 0.50
- DIMENSIONAL LIMITS APPLY BEFORE PROCESSES
- INTERPRET DIMENSIONS IN ACCORDANCE WITH ASME Y14.5M-1994
- REMOVE ALL BURRS AND SHARP EDGES
- PARENTHETICAL INFO FOR REF ONLY

DWN Justin Chambliss	DATE 9/1/2017
Engr Justin Chambliss	8/1/2017
CQE/QA	
CM	
Apprvd	

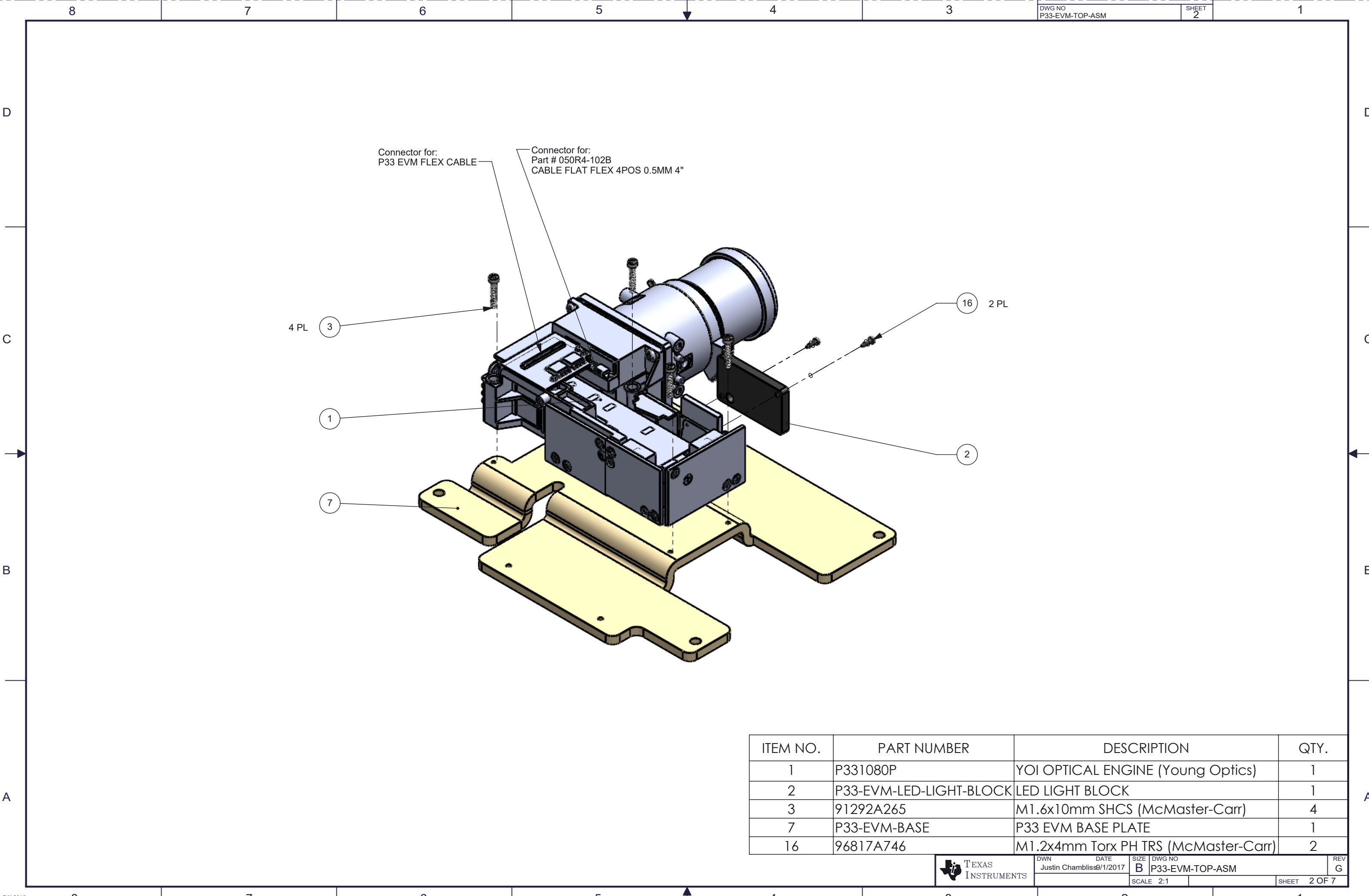


P33 XPR EVM KIT

SIZE B	DWG NO P33-EVM-TOP-ASM	REV G
SCALE 1:5		SHEET 1 OF 7



NEXT ASSY	USED ON
APPLICATION	



ITEM NO.	PART NUMBER	DESCRIPTION	QTY.
1	P331080P	YOI OPTICAL ENGINE (Young Optics)	1
2	P33-EVM-LED-LIGHT-BLOCK	LED LIGHT BLOCK	1
3	91292A265	M1.6x10mm SHCS (McMaster-Carr)	4
7	P33-EVM-BASE	P33 EVM BASE PLATE	1
16	96817A746	M1.2x4mm Torx PH TRS (McMaster-Carr)	2



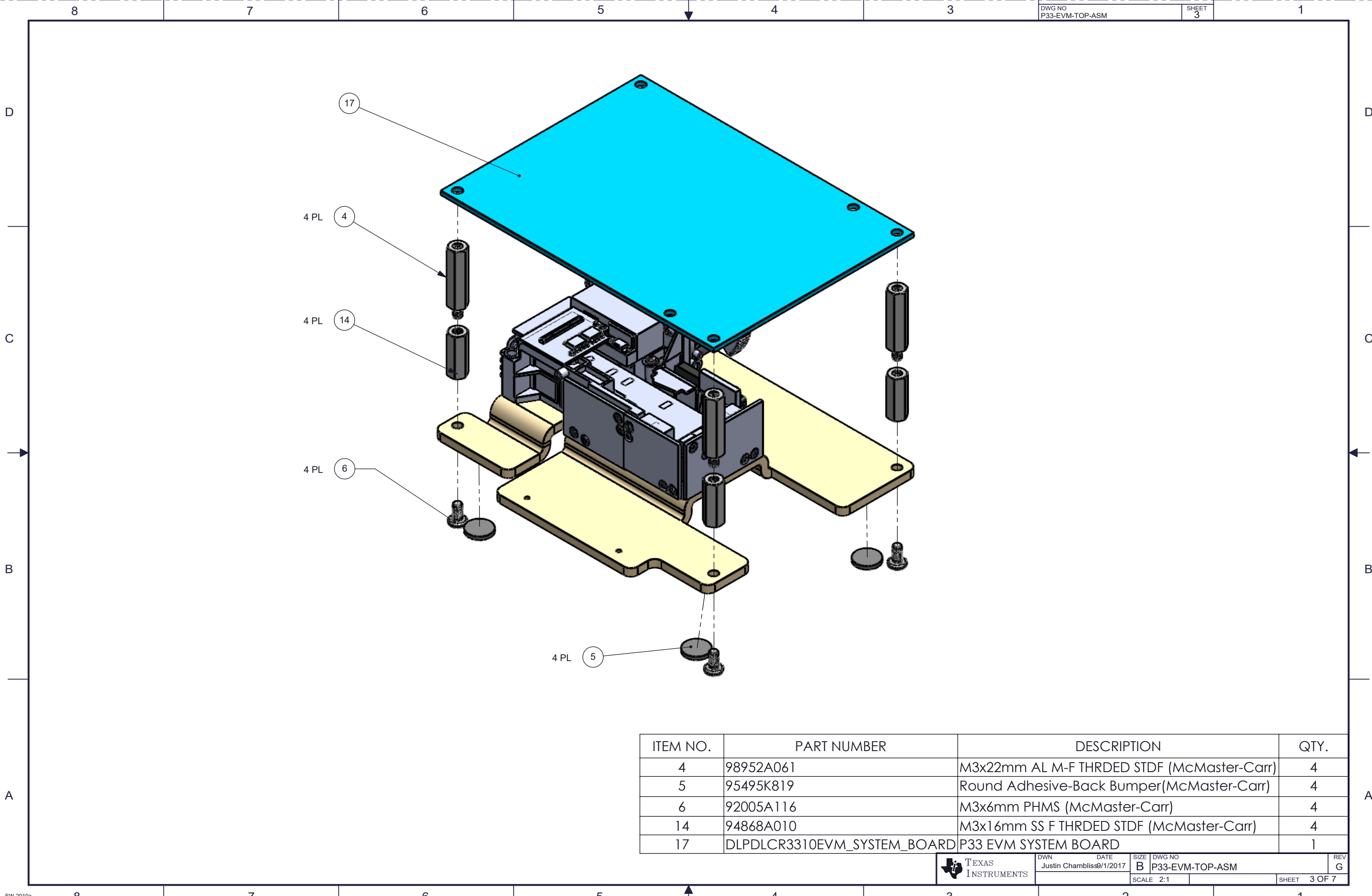
DWN Justin Chambliss9/1/2017

SIZE B DWG NO P33-EVM-TOP-ASM

REV G

SCALE 2:1

SHEET 2 OF 7



ITEM NO.	PART NUMBER	DESCRIPTION	QTY.
4	98952A061	M3x22mm AL M-F THRDED STDF (McMaster-Carr)	4
5	95495K819	Round Adhesive-Back Bumper(McMaster-Carr)	4
6	92005A116	M3x6mm PHMS (McMaster-Carr)	4
14	94868A010	M3x16mm SS F THRDED STDF (McMaster-Carr)	4
17	DLPDLCR3310EVM_SYSTEM_BOARD	P33 EVM SYSTEM BOARD	1



DWN
Justin Chambliss9/1/2017

DATE
9/1/2017

SIZE
B

DWG NO
P33-EVM-TOP-ASM

REV
G

SCALE 2:1

SHEET 3 OF 7

D

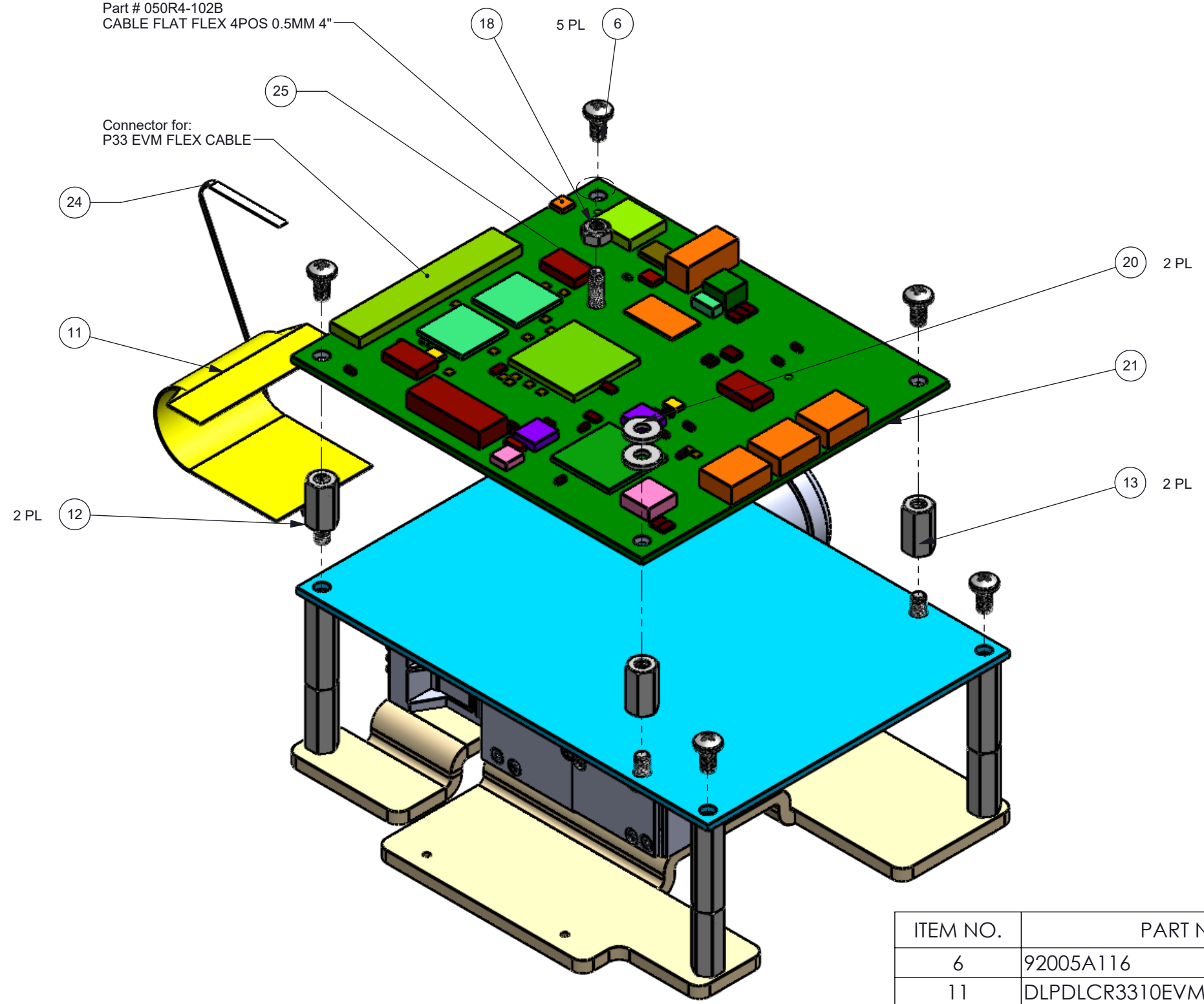
C

B

A

Connector for:
Part # 050R4-102B
CABLE FLAT FLEX 4POS 0.5MM 4"

Connector for:
P33 EVM FLEX CABLE



ITEM NO.	PART NUMBER	DESCRIPTION	QTY.
6	92005A116	M3x6mm PHMS (McMaster-Carr)	5
11	DLPDLCR3310EVM_DMD_FLEX_CABLE	P33 EVM FLEX CABLE	1
12	R30-3001102	M3x11mm BRASS M-F THRD STD F (Harwin)	2
13	R30-1001102	M3x11mm BRASS F THRD STD F (Harwin)	2
18	93369A116	M3x0.5 Nylon 6-6 Hex Nut (McMaster-Carr)	1
20	95610A330	M3 Nylon Flat Washer (McMaster-Carr)	2
21	DLPDLCR3310EVM_DISPLAY_BOARD	P33 EVM DISPLAY BOARD	1
24	050R4-102B	CABLE FLAT FLEX 4POS 0.5MM 4"	1
25	92005A120	M3x10mm Phillips RHS (McMaster-Carr)	1

D

C

B

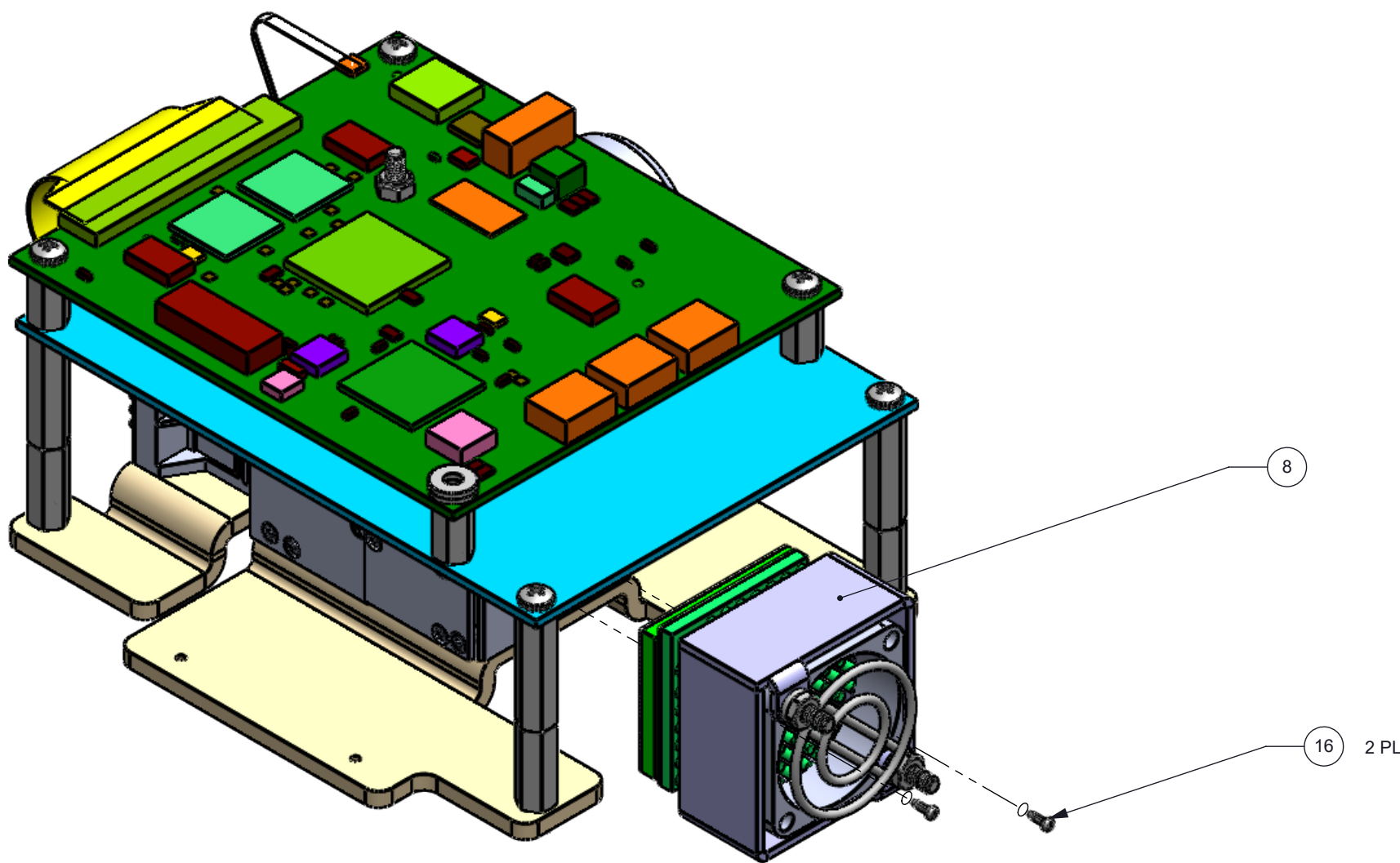
A

D

C

B

A



ITEM NO.	PART NUMBER	DESCRIPTION	QTY.
8	Green LED Heatsink SubAssembly	P33 EVM KIT GREEN LED HEATSINK SUBASSEMBLY	1
16	96817A746	M1.2x4mm Torx PH TRS (McMaster-Carr)	2

D

C

B

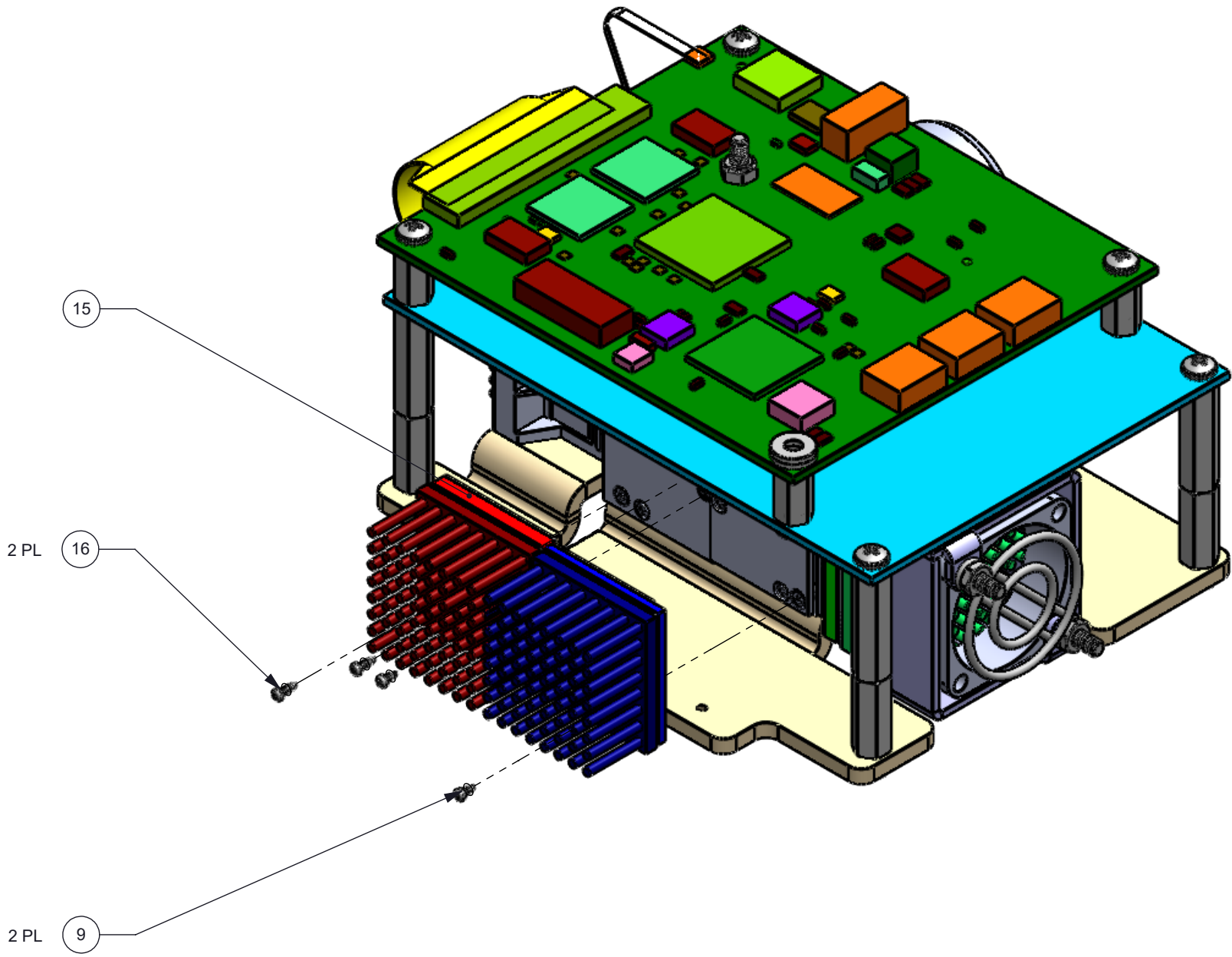
A

D

C

B

A



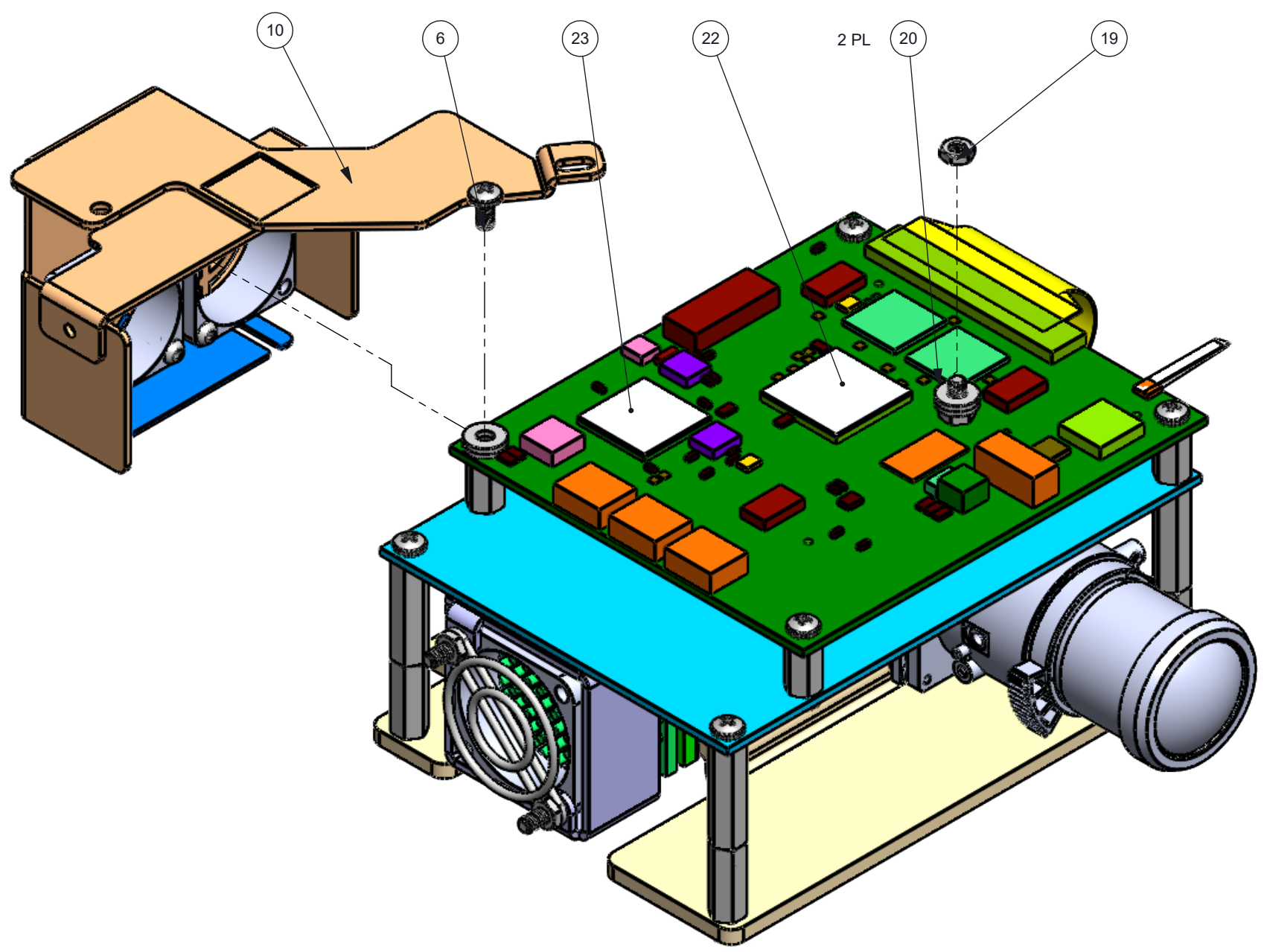
ITEM NO.	PART NUMBER	DESCRIPTION	QTY.
9	96817A744	M1.2x3mm Torx PH TRS (McMaster-Carr)	2
15	Red/Blue LED Heatsink SUBASSEMBLY	P33 EVM KIT Red/Blue LED Heatsink SubAssembly	1
16	96817A746	M1.2x4mm Torx PH TRS (McMaster-Carr)	2

D

C

B

A



D

C

B

A

ITEM NO.	PART NUMBER	DESCRIPTION	QTY.
6	92005A116	M3x6mm PHMS (McMaster-Carr)	1
10	P33-EVM-CHIP-HEATSINK-ASM	P33 EVM COMPONENT HEATSINK SUB ASSEMBLY	1
19	90710A030	M3x0.5 SS Thin HN (McMaster-Carr)	1
20	95610A330	M3 Nylon Flat Washer (McMaster-Carr)	2
22	120MM-1M-0.5MM-5590H-19.0x19.0x0.5mm	120MM-1M-0.5MM-5590H (3M)	1
23	120MM-1M-0.5MM-5590H-16.75x16.75x0.5mm	120MM-1M-0.5MM-5590H (3M)	1